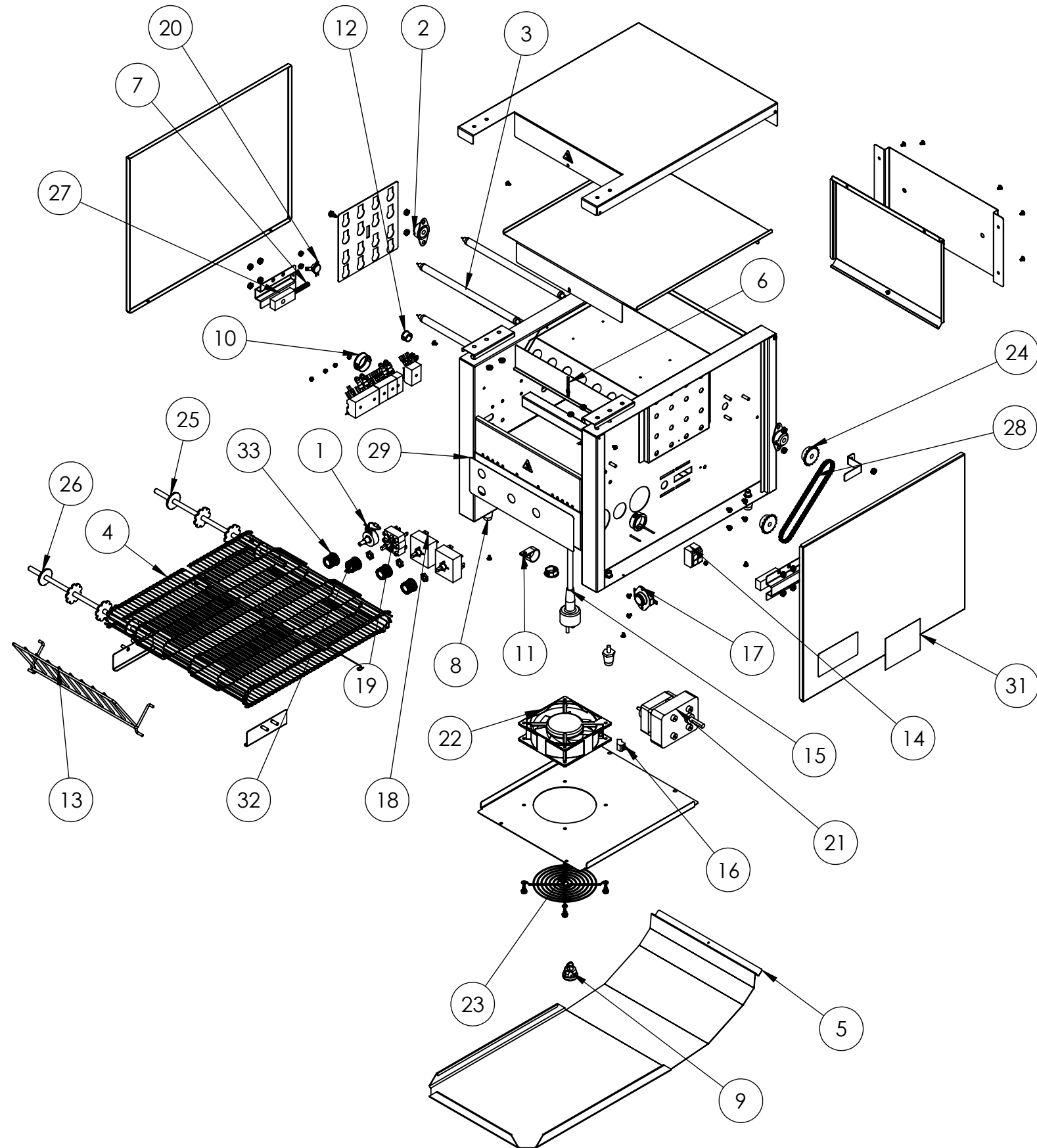




CONVEYOR TOASTER 4-550 230V SCHUKO



| ITEM NO. | PART NUMBER | DESCRIPTION | QTY. |
|----------|-------------|----------------------------------|------|
| 1 | B200901 | CONTROL, SPEED 500 OHM CT4 | 1 |
| 2 | B201100 | BEARING ASSEMBLY 5/16" | 2 |
| 3 | 59854 | HEATER TUBE 11-3/8 120V 700W | 4 |
| 4 | B204273 | WIRE CONVEYOR BELT 10.5" X 30" | 1 |
| 5 | B300012 | CT4 14" TOAST CHUTE | 1 |
| 6 | B300058 | CT4H 14" HEAT SHUTTER | 1 |
| 7 | B400260 | SPRING, .038" DIA, 2.462" LENGTH | 2 |
| 8 | B400300 | LEGS, BLACK 1" 1/4-20 | 4 |
| 9 | B400320 | 14 GA STRAIGHT STRAIN RELIEF | 1 |
| 10 | B400330 | 1 1/4" SNAP BUSHING | 2 |
| 11 | B400331 | 7/8 WIRE CLAMP | 1 |
| 12 | B400332 | 5/8 SNAP BUSHING | 1 |
| 13 | B400381 | LOAD-UP RACK, WIRE, CT4 | 1 |
| 14 | B401034 | TERMINAL BLOCK 2 POSIITON | 1 |
| 15 | B401056 | SCHUKO POWER CORD 220-240V | 1 |
| 16 | B401060 | CORD,FAN,HP-75.24-A | 1 |
| 17 | B401100 | RESET SWITCH | 1 |
| 18 | B401102 | SWITCH, 240V | 2 |
| 19 | B401103 | SWITCH, ROTARY POWER | 1 |
| 20 | B401107 | SWITCH FAN CERAMIC | 1 |
| 21 | B401201 | DRIVE MOTOR 208/240V RMS 344 | 1 |
| 22 | B401211 | 230V MOTOR, FAN | 1 |
| 23 | B401220 | GUARD, FAN | 1 |
| 24 | B401300 | SPROCKET, 25B17 X 8MM | 2 |
| 25 | B401340 | SHAFT, DRIVE 10.5" | 1 |
| 26 | B401341 | SHAFT, IDLER 10.5" | 1 |
| 27 | B401350 | FRONT SPRING BEARING | 2 |
| 28 | B401388 | DRIVE CHAIN, LADDER 15" | 1 |
| 29 | B401401 | CT4 CONTROL LABEL | 1 |
| 30 | B401404 | CORD WARNING LABEL | 1 |
| 31 | B401425 | CT4 RESET LABEL | 1 |
| 32 | B405018 | SILVER PUSH-ON KNOB | 3 |
| 33 | B405019 | SILVER PUSH-ON KNOB W/ SET SCREW | 1 |