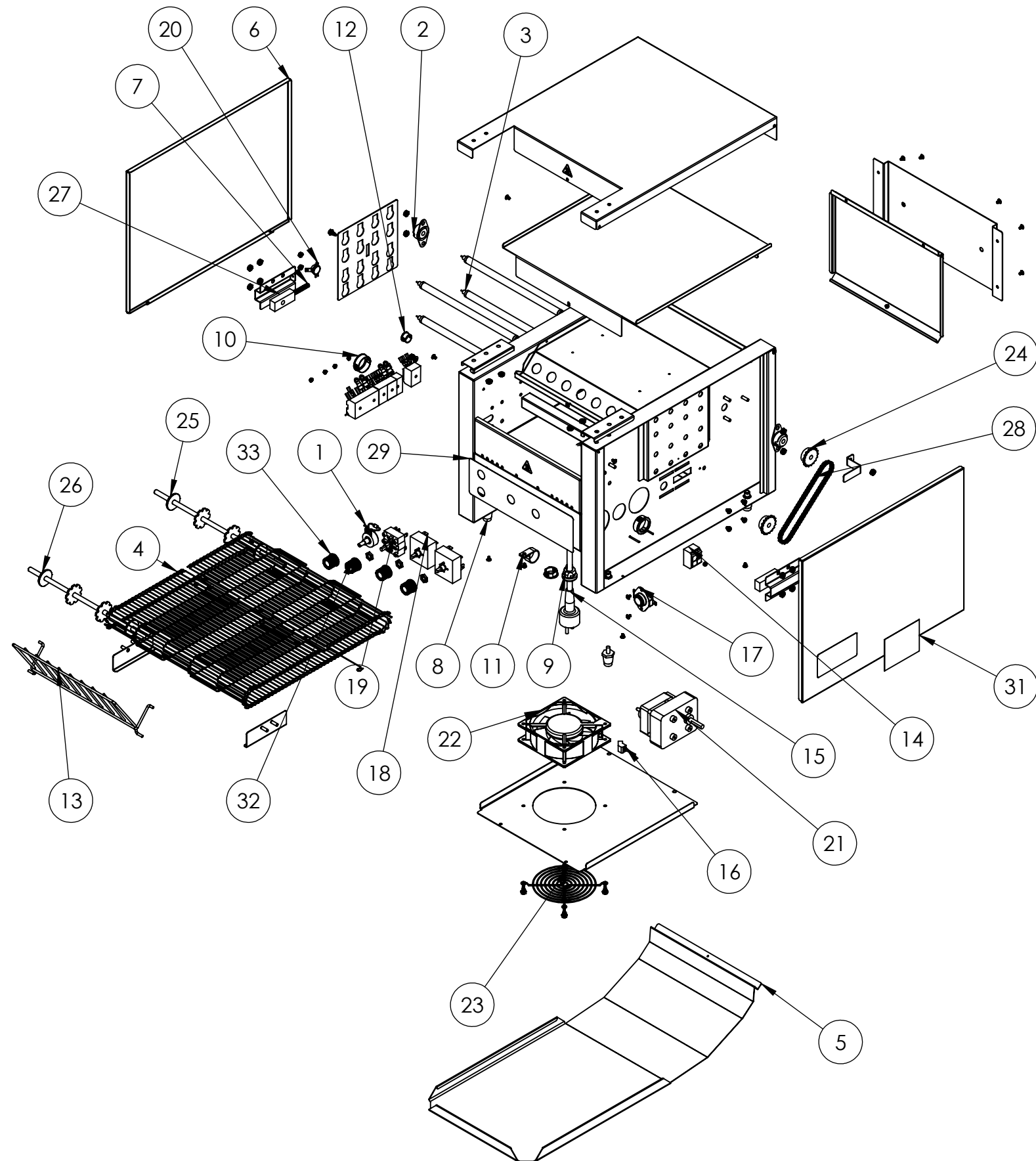




CONVEYOR TOASTER 4-800 230V SCHUKO



ITEM NO.	PART NUMBER	DESCRIPTION	QTY.
1	B200901	CONTROL, SPEED 500 OHM CT4	1
2	B201100	BEARING ASSEMBLY 5/16"	2
3	59854	HEATER TUBE 11-3/8 120V 700W	4
4	B204273	WIRE CONVEYOR BELT 10.5" X 30"	1
5	B300012	CT4 14" TOAST CHUTE	1
6	B300037	CT4 SIDE PANEL	2
7	B400260	SPRING, .038" DIA, 2.462" LENGTH	2
8	B400300	LEGS, BLACK 1" 1/4-20	4
9	B400320	14 GA STRAIGHT STRAIN RELIEF	1
10	B400330	1 1/4" SNAP BUSHING	2
11	B400331	7/8 WIRE CLAMP	1
12	B400332	5/8 SNAP BUSHING	1
13	B400381	LOAD-UP RACK, WIRE, CT4	1
14	B401034	TERMINAL BLOCK 2 POSIITON	1
15	B401056	SCHUKO POWER CORD 220-240V	1
16	B401060	CORD,FAN,HP-75.24-A	1
17	B401100	RESET SWITCH	1
18	B401102	SWITCH, 240V	2
19	B401103	SWITCH, ROTARY POWER	1
20	B401107	SWITCH FAN CERAMIC	1
21	B401201	DRIVE MOTOR 208/240V RMS 344	1
22	B401211	230V MOTOR, FAN	1
23	B401220	GUARD, FAN	1
24	B401300	SPROCKET, 25B17 X 8MM	2
25	B401340	SHAFT, DRIVE 10.5"	1
26	B401341	SHAFT, IDLER 10.5"	1
27	B401350	FRONT SPRING BEARING	2
28	B401388	DRIVE CHAIN, LADDER 15"	1
29	B401401	CT4 CONTROL LABEL	1
30	B401404	CORD WARNING LABEL	1
31	B401425	CT4 RESET LABEL	1
32	B405018	SILVER PUSH-ON KNOB	3
33	B405019	SILVER PUSH-ON KNOB W/ SET SCREW	1