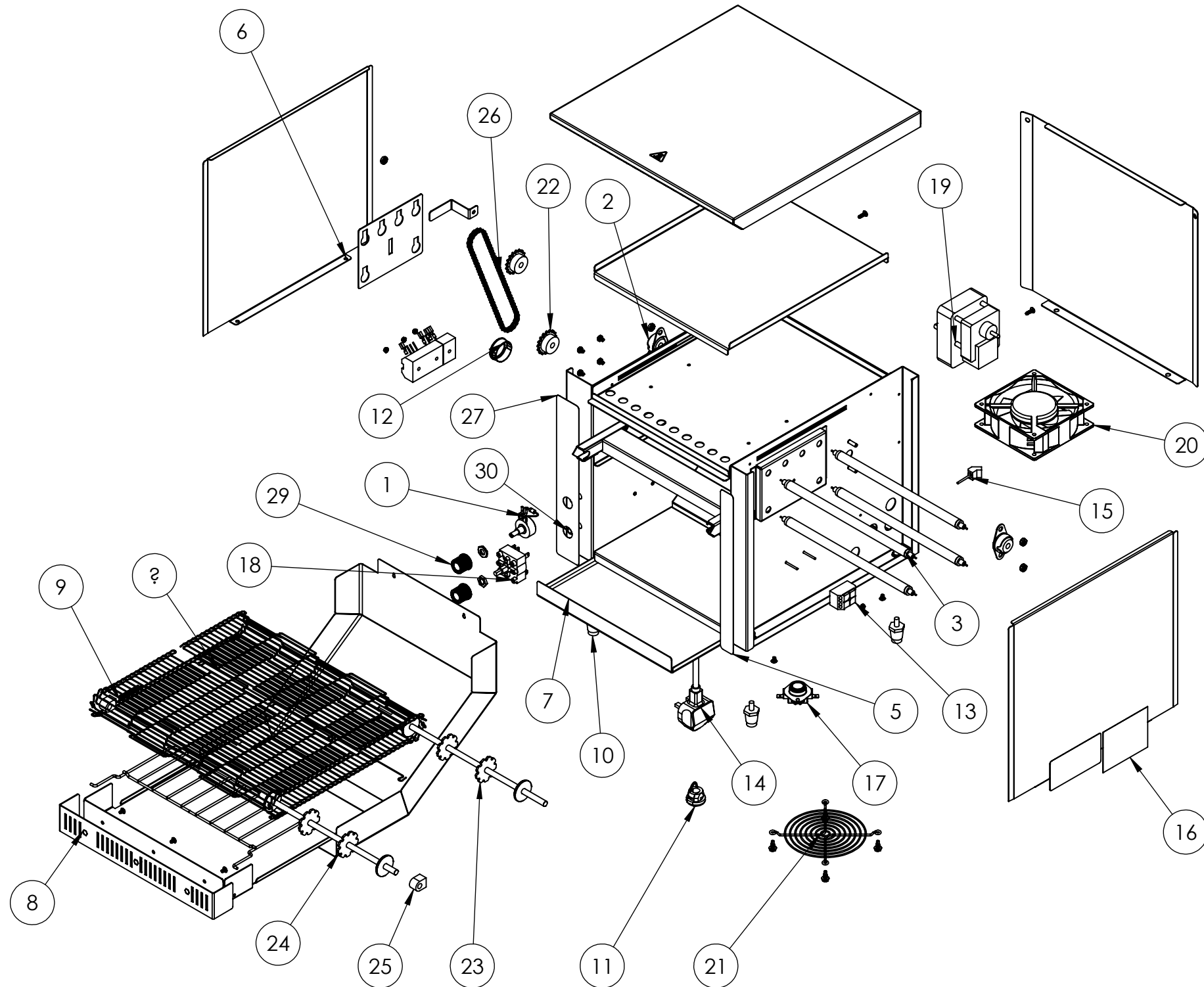




CONVEYOR TOASTER 2-350 230V UK



ITEM NO.	PART NUMBER	DESCRIPTION	QTY.
1	B200906	CONTROL, SPEED 500 OHM	1
2	B201100	BEARING ASSEMBLY 5/16"	2
3	59893	HEATER TUBE 11-3/8	4
4	B204272	WIRE CONVEYOR BELT 10.5" X 25"	1
5	B204274	CT2 RIGHT SIDE LABEL	1
6	B300111	CT2 SIDE PANEL	2
7	B300115	TRAY, SLIDE OUT	1
8	B300133	CT2/CT2H CURVED FRONT	1
9	B400261	SPRING, .038" DIA, 1.500" LENGTH	1
10	B400300	LEGS, BLACK 1" 1/4-20	4
11	B400320	14 GA STRAIGHT STRAIN RELIEF	1
12	B400330	1 1/4" SNAP BUSHING	1
13	B401034	TERMINAL BLOCK 2 POSIITON	1
14	B401054	CORD, UK 13 AMP FUSE	1
15	B401060	CORD,FAN,HP-75.24-A	1
16	B401093	CT2 RESET LABEL	1
17	B401100	RESET SWITCH	1
18	B401103	SWITCH, ROTARY POWER	1
19	B401206	MOTOR ,DRIVE 230/240V, 50 HZ R	1
20	B401211	230V MOTOR, FAN	1
21	B401220	GUARD, FAN	1
22	B401300	SPROCKET, 25B17 X 8MM	2
23	B401340	SHAFT, DRIVE 10.5"	1
24	B401344	SHAFT, IDLER 10.625" CT2	1
25	B401352	BEARING, FRONT, SPRING-HOUSING	2
26	B401389	DRIVE CHAIN, LADDER 18.5"	1
27	B401400	CT2 CONTROL LABEL	1
28	B401404	CORD WARNING LABEL	1
29	B405018	SILVER PUSH-ON KNOB	1
30	B405019	SILVER PUSH-ON KNOB W/ SET SCREW	1